



## GNSS Solutions

### THE SOLUTION FOR ALL GPS SURVEY DATA

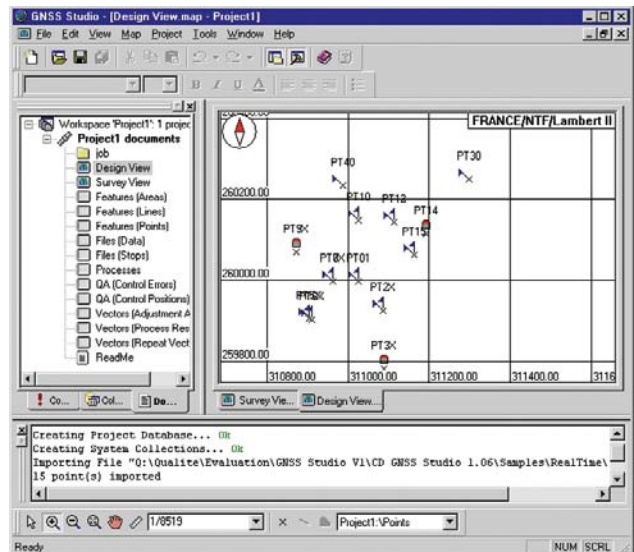
#### A SINGLE PROGRAM FOR ALL APPLICATIONS

GNSS Solutions™ software is the indispensable tool for all surveyors who need to efficiently and smoothly conduct their GPS surveys. GNSS Solutions post processing gives optimal results from any combination of static, rapid static or kinematic data. The software supports a wide range of surveying applications, handling both real-time and post-processing data within the same project thus opening new horizons to surveyors.

#### INTUITIVE HANDLING OF GRAPHICAL DATA

GNSS Solutions software is organized around a powerful database which holds all the data created or collected at different stages during user projects. GNSS Solutions has now been redesigned to use the successful workflow strategy originally developed for Ashtech Solutions™. Map design, survey and time views enable an optimum overview of large projects. Any collection of data can be viewed in different forms through simple drag and drop operations. The documents created include tables, maps or graphs and are all attached to the project.

Compatibility with the OpenGIS standard format allows easy data flow to numerous GIS software packages. Importing raster or vector map formats allows surveyors to open background projects and combine them with land survey projects.



#### EASILY ADAPTABLE TO LOCAL REQUIREMENTS

GNSS Solutions is available in six languages enabling the user to install the language of their choice. Numerous mapping projections and local coordinate transformations are available, allowing users to easily modify them according to their own needs. Users may create individual report files in order to comply with national standards.

## TECHNICAL SPECIFICATIONS

### Applications

- Topography
- Geodesy
- Construction
- GIS surveys

### Main functions

#### Real-time survey

- Interactive communication with handheld survey controller
- Coordinate transformation using a large set of predefined coordinate systems
- Display and analysis of survey results
- Capability to import vector/raster images as background maps
- Data export (ASCII user defined, NMEA, CR5, CRD, DXF)
- Report generation (RTF documents)

#### Post-processing survey L1 & L1/L2

- Automatic project control with optimized default settings
- Modes: Static, Rapid Static, Stop&Go Kinematic, Continuous Kinematic
- Occupations tab (Files vs. Time)
- Raw data plots
- Configurable quality assurance test
- Precise orbits
- Long baselines (up to 1000 km)

#### Feature code processing

- Processing, editing and attributing of any point, line or area feature
- Easy conversion to CAD programs using dxf layers

#### Data views

- Survey
- Time
- Table
- All views can be combined

#### Network adjustment

- Blunder detection including Chi-Square and Tau tests
- Display of precision results in graphical form
- Testing network adjustment using control points

### Mission Planning Utility

- Importing and viewing sets of almanacs
- Prediction point easily defined using the graphical world map editor
- Numerous viewing options (schedule, range, doppler, elevation, azimuth, DOP)

### Receiver Commands Utility

- Enabling communications with a GPS receiver
- Sending commands to a GPS receiver
- Programmable GPS recorder

### Datum Transformation and Map Projection Utility

- Support of all major world projections
- Support of numerous national transformations
- Support of user coordinate calibration
- Intuitive loading of projection files into project and handheld controller

### Geoids Utility

- Selecting a geoid from a list of models
- Extracting regions from a geoid model
- Importing new geoid models
- Uploading a geoid model into a receiver

### Rinex Converter Utility

- Automatic connection to an internet page with user-definable address
- Automatic RINEX extraction and import by date and time
- Merging of two or more RINEX files

### Internet Download

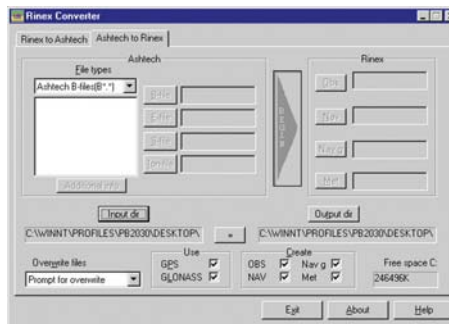
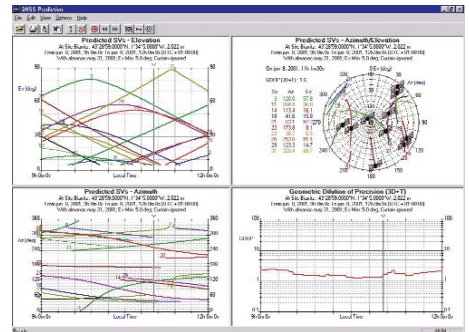
- RINEX data
- Precise ephemeris

### System requirements

- Pentium® 233 MHz min, 300 MHz recommended
- Operating System: Windows® 2000 / XP
- RAM: 64 MB min, 128 MB recommended
- Recommended space on hard disk: 200 MB

### Languages Supported

- Chinese
- English
- French
- German
- Russian
- Spanish



Name	Description	East	North
1	PT01	311925.348	259997.945
2	PT02	311887.465	259936.626
3	PT03	311887.200	259752.172
4	PT04	310903.149	259965.637
5	PT05	310911.342	259900.274
6	PT06	310963.451	259997.712
7	PT07	310971.931	260070.602
8	PT08	311025.921	260148.162
9	PT09	311112.795	260144.076
10	PT10	311112.790	260143.892
11	PT11	311191.866	260114.344
12	PT12	311163.095	260005.274
13	PT13	311299.000	260250.000
14	PT14	310987.000	260235.000
15	PT15		

### Thales

#### Survey Solutions Contact Information

In USA +1 408 615 3970 • Fax +1 408 615 5200

Toll Free (Sales in USA/Canada) 1 800 922 2401

In South America +56 2 273 3214 • Fax +56 2 273 3187

Email [surveysales@thalesnavigation.com](mailto:surveysales@thalesnavigation.com)

In Singapore +65 6235 3678 • Fax +65 6235 4869

In China +86 10 6566 9866 • Fax +86 10 6566 0246

Email [surveysalesapac@thalesnavigation.com](mailto:surveysalesapac@thalesnavigation.com)

Web site [www.thalesgroup.com/navigation](http://www.thalesgroup.com/navigation)